

Sarah + Ruby



Oro Fino

We hand-paint each individual sheet of this domino-style wallpaper in our USA studios using a centuries-old artisanal paste paper technique. Historically, this method was used to create decorative end-papers for books. We've taken this traditional craft out of the book, transforming it into a modern treatment for your walls.

Gold-Green



Gold-Teal



Silver-Blue



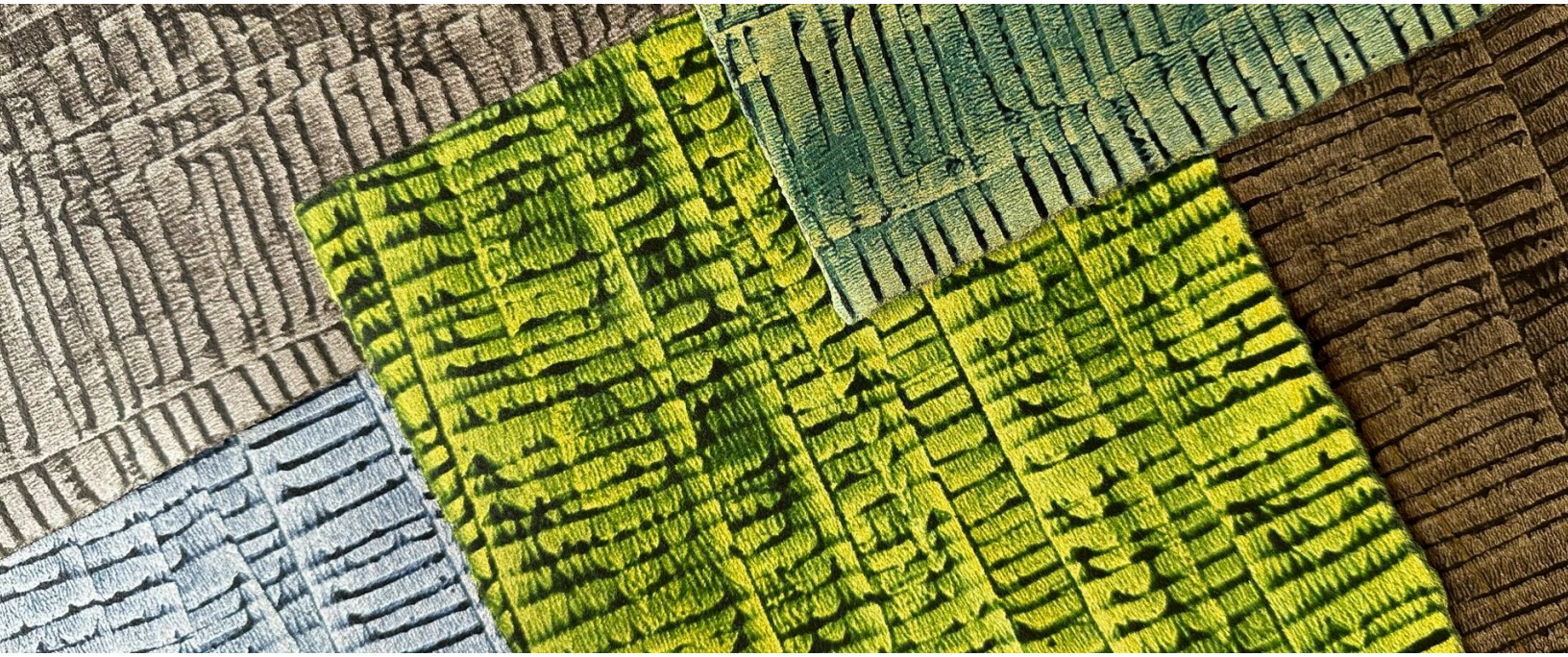
Silver-Umber



Brass-Umber



Sarah + Ruby



DETAILS

Size: 22"x30" sheets, no trimming needed. Up to 1/4" overlap recommended.

Repeat: None

Edges: Deckled edges are designed to overlap and show. This product is not intended to be seamless.

Cleanability: Lightly wipeable

Lead Time: Approx. 4 weeks

Minimum Order: 10 sheets

Pricing on Request

GOOD TO KNOW

Each sheet is individually painted using a centuries-old artisanal paste paper technique on luxurious 100% cotton paper. The natural deckled edges are meant to overlap and show, emphasizing the artistic nuances of every sheet.

Each sheet has a stunning dimensional quality and a subtle sense of movement. But the real surprise is the **TEXTURE** – it has an almost fabric-like finish.

Bespoke color available to the trade.

Colors on your monitor may differ from actual product, so please order a sample.

Hand-painted in the USA.

INSTALL LAYOUT OPTIONS

