



Sarah + Ruby

HANDPAINTED SHEET WALLPAPER



Each sheet is individually hand-painted to order in Southern California or Boston using a centuries-old artisanal paste paper technique.

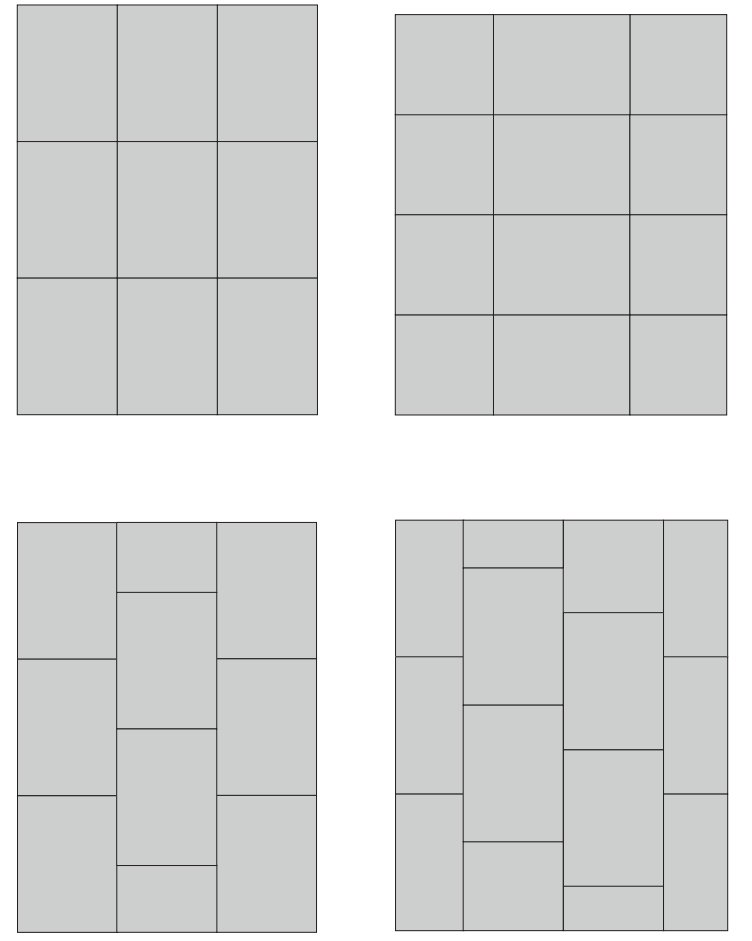


Deckled Edges are intended to overlap and show.

Minimum Order: 10 sheets
Lead Time: 4 weeks
Cleanability: Lightly wipeable

Domino-style sheets offer layout flexibility:

- vertical layouts
- horizontal layouts
- straight drops
- half drops
- third drops
- mix and match colors/patterns





LANAI

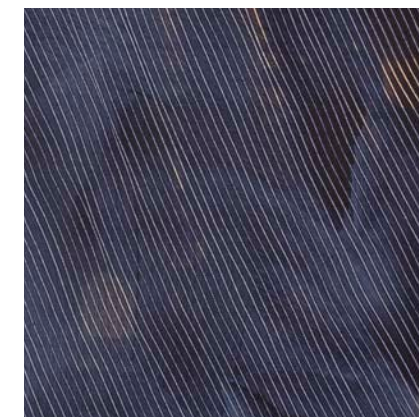
22"x30" sheets with deckled edges, no repeat



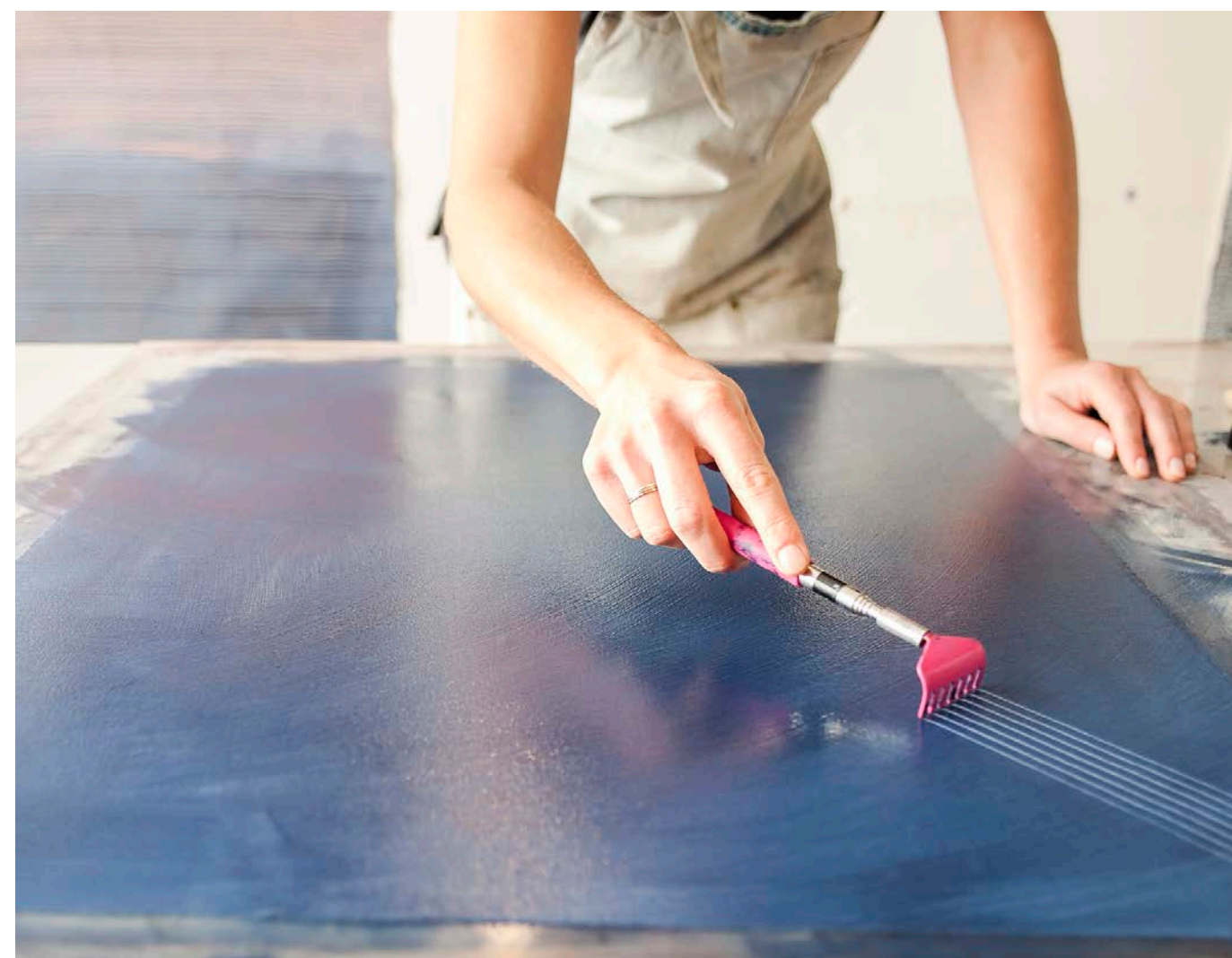
Tobacco



Jungle



Indigo





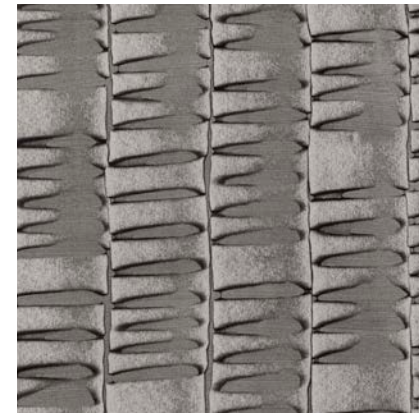
Styled by Judy Aldridge/Atlantis Home, Texas

Lanai in Jungle



LOW TIDE

22"x30" sheets with deckled edges, no repeat



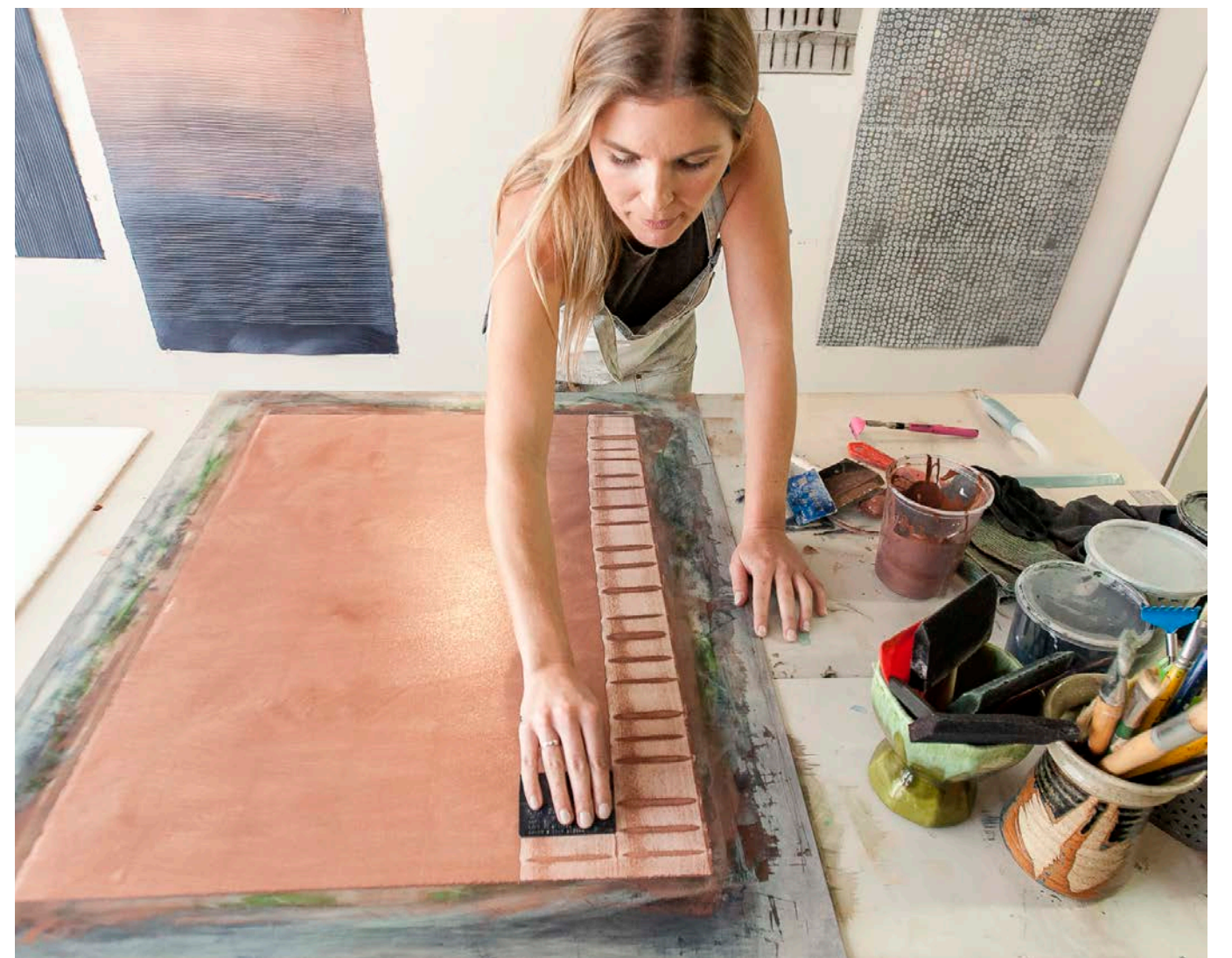
Smoke



Blush



Copper





Low Tide in Copper

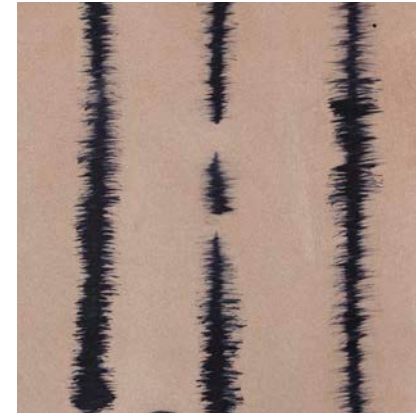


Low Tide in Blush

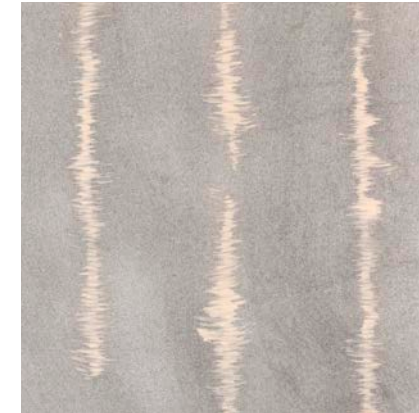


GOOD VIBRATIONS

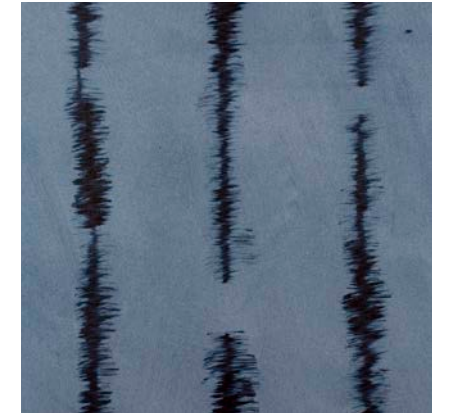
22"x30" sheets with deckled edges, no repeat



Copper/Indigo



Smoke/Blush



Indigo/Indigo





Good Vibrations in Copper/Indigo

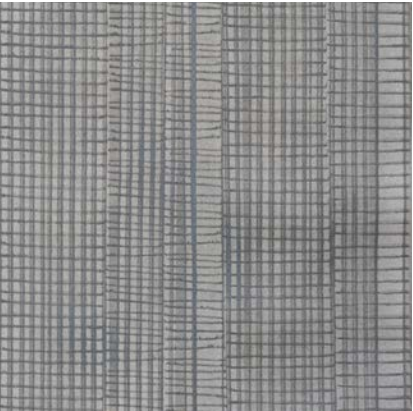
Good Vibrations in Custom Color



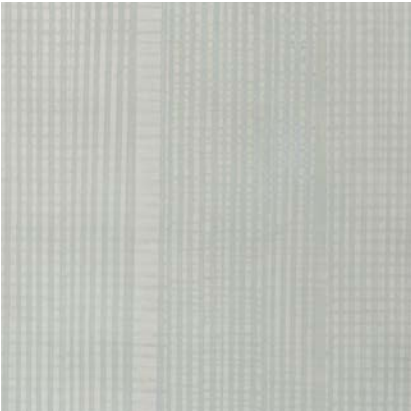


TRAVELER

22"x30" sheets with deckled edges, no repeat



Charcoal



Sage



Indigo





Traveler in Charcoal



CIRRO

22"x30" sheets with deckled edges, no repeat



Mist



Dune



Sunrise



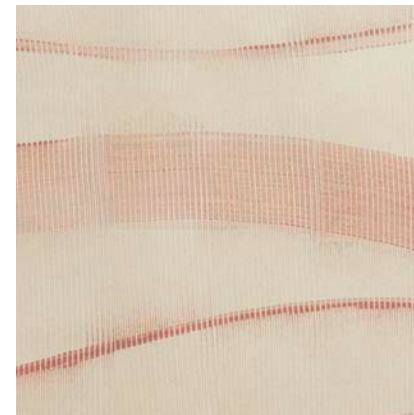


Cirro in Mist



CADIZ

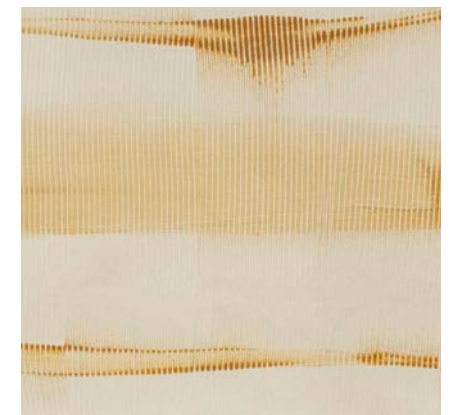
22"x22" sheets with deckled edges, no repeat



Peony



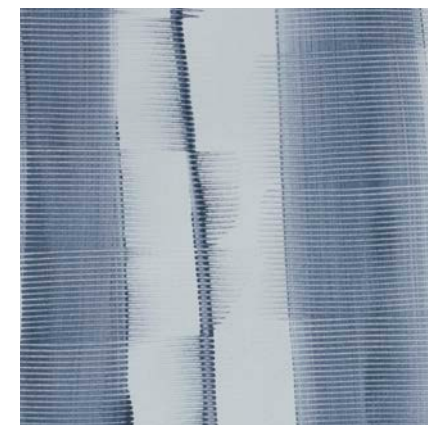
Emerald



Ochre



Olive



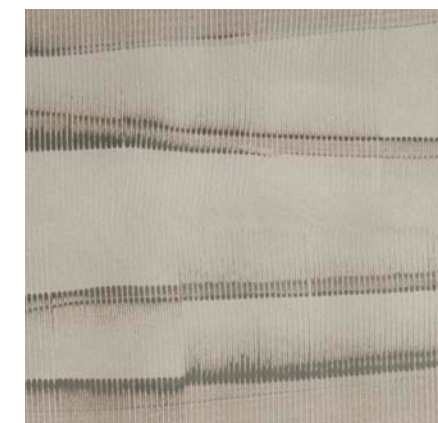
Denim



Fig



Sage



Charcoal



Cadiz in Peony, Emerald, Olive, Ochre

CALYPSO

Available as either 22"x30" or 22"x22" sheets

Sheets have deckled edges, no repeat



Rose



Matcha



Thistle



Marine



Storm

BESPOKE

Bespoke color and pattern adjustments are available to the trade.

Please provide a color reference (such as a paint color number from a well-known paint company).

Lead time for strike-offs (samples) is about 2 weeks.

Sampling fees apply.





Sarah + Ruby

415.840.7004

www.sarahrubydesign.com